

CHOOSE FRANCE

FOR RESEARCH



THE ROLE OF CAMPUS FRANCE

Personalized services for international students

Comprehensive information on French higher education

Advice on study options

Assistance with legal and regulatory compliance

Preparation for departure



DOCTORAL STUDIES

IN FRANCE



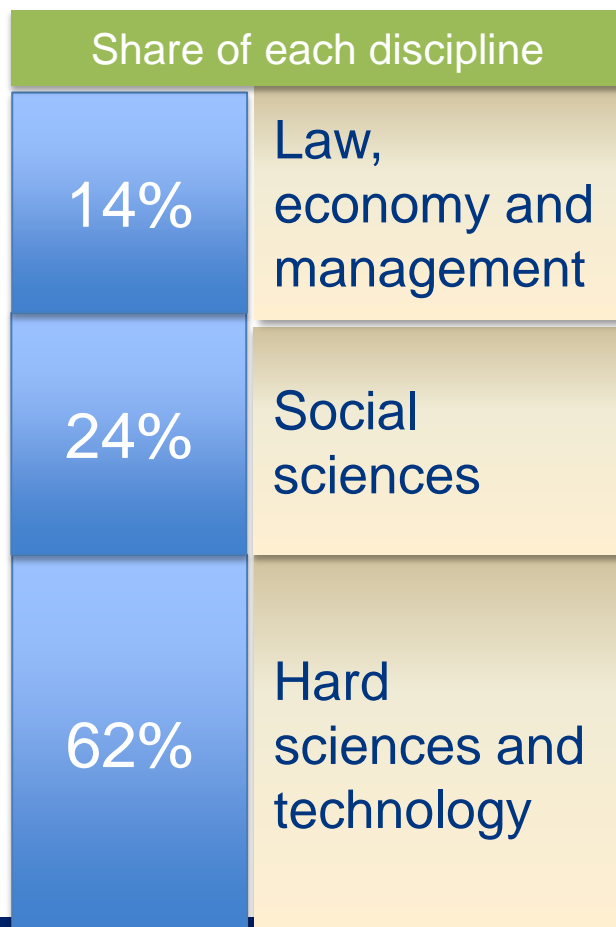
Doctoral studies in numbers

75600

PhD students
(2013/14)

14400

Graduated
annually
(2014)



32000

Foreign PhD
students

= 42%

6000

graduated/
year

Pays d'origine	2016-2017
CHINE	1951
ITALIE	1776
TUNISIE	1653
ALGERIE	1475
LIBAN	1399
MAROC	991
BRESIL	770
VIETNAM	749
ESPAGNE	619
IRAN	527
ALLEMAGNE	509
RUSSIE	486
SENEGAL	483
COLOMBIE	438
INDE	438
CAMEROUN	429
GRECE	382
COTE D'IVOIRE	368
MEXIQUE	357
GABON	309



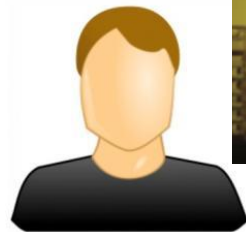
Doctoral school



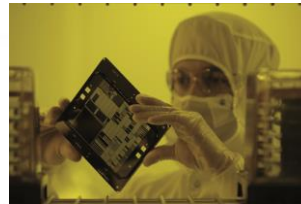
Doctoral studies

- As part of a Doctoral School on acceptance of a thesis subject
- research work (laboratory, research center)
- under the supervision of one or two thesis supervisors
- writing and defending your thesis to obtain the PhD

Research laboratory



Thesis supervisor

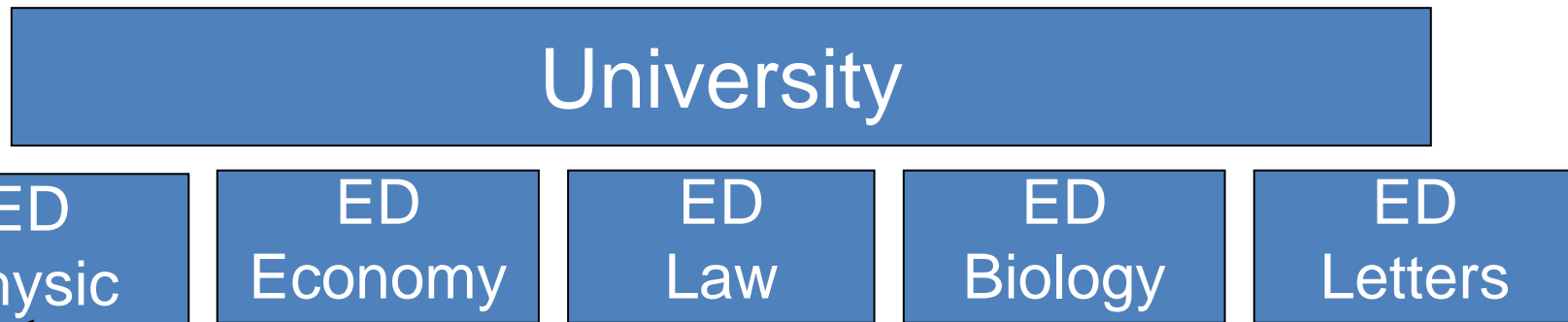


Phd Student



Doctoral schools

Doctoral Schools (ED) organize and manage the doctoral studies
Registration • Financial support • Monitoring of your work •
• Training course • Thesis defense



- Optics Laboratory
- Mechanics Laboratory
- Theoretical Physics Laboratory
- Astrophysics Laboratory

275 doctoral schools
2500 public laboratories



Training provided by the Doctoral School during the PhD



- *Candidates complete approximately 160 hours of instruction over the 3-year period of doctoral training.*
- *Some parts of the instruction are required; the rest may be freely chosen by the candidate*

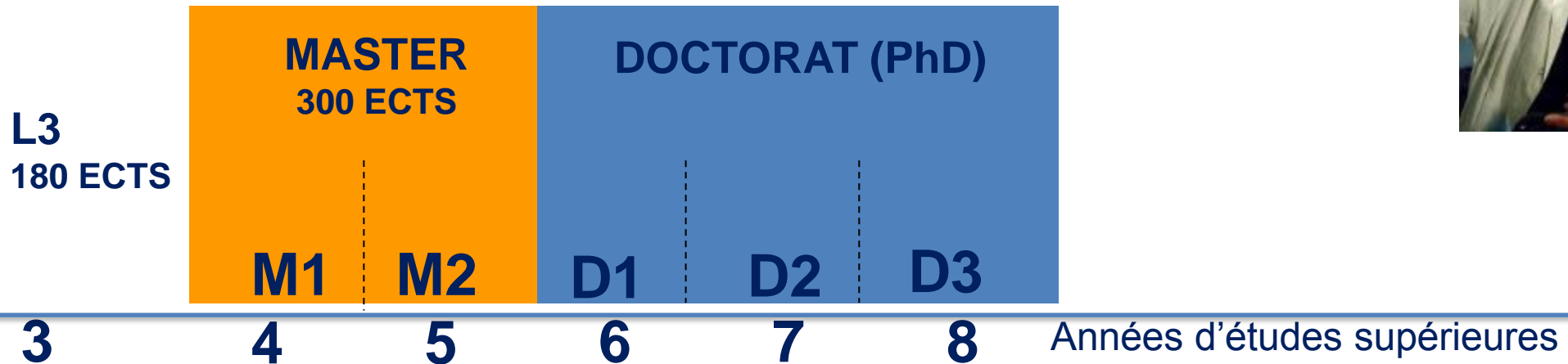
EXAMPLES

- ***Methodology and language mastery:*** editing of scientific articles, French language courses, etc.
- ***Business and innovation:*** startups, management, project management, etc.
- ***Academic courses:*** summer sessions, seminars, etc.
- ***Teaching and presenting science to lay audiences:*** communication, science journalism, etc.



Duration of a doctorate

*In France, Doctoral studies focus on laboratory research work, research center ... with very few courses
Duration from 3 to 6 years (on exemption), according to academic fields.*



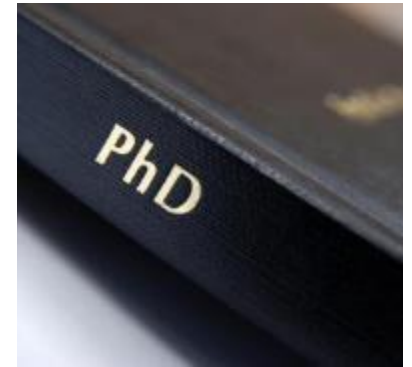
- 3 – 4 years for hard sciences
- 4 – 5 years in biology
- 4 – 6 years in social sciences



Do I need to speak French ?

No need to speak French to fulfill a PhD in France, in the field of hard sciences, engineering and biology

- Discussions with the supervisor will be held in English
- French courses
- Thesis written and defended in English
- Short summary in French



For linguistics, anthropology, history, geography, philosophy and psychology: B1 level

For economy, marketing, political sciences, communication and law: it depends!



- « Full » doctoral studies : 1 supervisor in France
- Cotutelle – Double degree PhD
- Doctoral studies in a company (CIFRE)



« full » *Doctorate in France*



France

1 thesis supervisor

1 thesis supervisor in France

PhD student

This is the "simple" doctorate : in France in 3 years
Price of 1 year of doctorat in France : 391 €

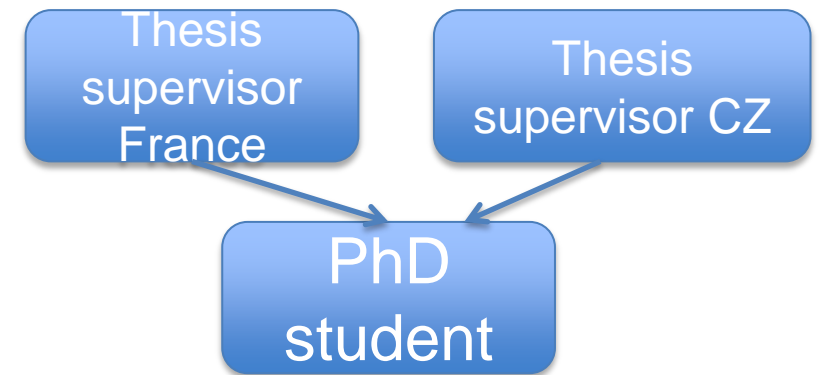


Cotutelle

Doctoral studies in both countries



2 Thesis supervisor



CoTutelle:

One diploma with both universities
Or two diploma
Enrollment in both universities
A convention must be signed
between the two universities

Possibility to
obtain a mobility
grant for a
doctoral internship



Doctoral studies « CIFRE »

◆ Doctoral studies in a company: CIFRE

- Writing of the thesis in the laboratory of a private company, in cooperation with a public university or laboratory

◆ Advantages

- Double experience: university and company
- Employed by the company
- Average salary: 1800€/month

**4200 CIFRE PhD students in
2015**
700 foreign doctoral students



www.anrt.asso.fr/fr/espace_cifre/accueil.jsp



FIND A

DOCTORATE

SCHOOL



Find a Doctoral school

2 modalities according to the disciplines

- **In “hard” sciences** -Physics, Chemistry, Mathematics, Biology, Engineering Sciences-

Application to a topic offered by a thesis supervisor

With your own finances, possibility to suggest a thesis' topic

- **In social sciences :**

History, law, political sciences, philosophy, geography, etc

Identification of a professor who can become your supervisor

Suggestion of a research topic

In any case, contact the Doctoral School: your thesis subject, your thesis supervisor and your admission will be supervised by the Doctoral School on which your director and laboratory depend.



HOW TO FIND A DOCTORAL SCHOOL ?

www.republiquetcheque.campusfrance.org



CAMPUS FRANCE
campusfrance.org

Agence française pour la promotion de l'enseignement supérieur, l'accueil et la mobilité internationale

CAMPUS FRANCE CHOISIR LA FRANCE ETUDIER EN FRANCE PRÉPARER SON SÉJOUR VIVRE EN FRANCE APPELS À CANDIDATURE LA RECHERCHE EN FRANCE



Réussir vos études en France c'est d'abord faire confiance à Campus France, pour vous aider à trouver votre formation, à la financer et à préparer votre séjour.

Financez vos études
Trouvez un financement pour vos études et vos recherches en France

Pays

Rechercher

Trouvez votre formation
Trouvez votre formation parmi les 36 000 formations françaises

Catalogues

Mot-clé

Rechercher

Chercher dans ce site

Connectez-vous !

Services en ligne

Retrouvez ou créez votre dossier "Mon Campus France", accédez aux services en ligne.



Search engine of Doctoral Schools

CAMPUS FRANCE

La Recherche en France

ACCUEIL ANNUAIRE DES ECOLES DOCTORALES OFFRES (DOCTORAT, STAGE DE MASTER & POST-DOC)

Annuaire des Ecoles Doctorales

mot-clé Rechercher

- Agronomie Ecologie
- Biologie Santé
- Chimie
- Droit, Gestion, Economie, Politique
- Informatique
- Maths
- Physique
- Sciences Humaines et Sociales
- Sciences pour l'Ingénieur
- Terre & Univers

Voir la liste complète

Map of France showing the number of doctoral schools in each region:

Region	Number of Doctoral Schools
Bretagne	8
Normandie	8
Île-de-France	99
Grand-Est	21
Pays-de-la-Loire	8
Centre-Val-de-Loire	5
Bourgogne-Franche-Comté	5
Nouvelle-Aquitaine	19
Auvergne-Rhône-Alpes	35
Occitanie	26
Provence-Alpes Côte d'Azur	21
Guadeloupe	1
Guyane	1
Martinique	1
Réunion	2
Polynésie Française	1
Nouvelle-Calédonie	1
Corse	1



Doctoral schools

CAMPUS FRANCE

La Recherche en France

ANNUAIRE DES ECOLES DOCTORALES

SE CONNECTER

Annuaire des Ecoles Doctorales

Mot clé Rechercher

270 éléments

Pertinence ↓

- Effacer tous les filtres ✕
- ▶ Domaines & disciplines ✕
- ▶ Régions ✕
- ▶ Institutions, universités... ✕

ED 467	Aéronautique - astronautique	INSTITUT SUPÉRIEUR DE L'AÉRONAUTIQUE ET DE L'ESPACE	Sciences pour l'Ingénieur	Midi-Pyrénées
ED 581	Agriculture, Alimentation, Biologie, Environnement, Santé (ABIES)	UNIVERSITÉ PARIS-SACLAY	Agronomie Ecologie	Ile-de-France
ED 112	Archéologie	UNIVERSITE PARIS 1	Sciences Humaines et Sociales	Ile-de-France
ED 267	Arts et medias	UNIVERSITÉ SORBONNE PARIS CITÉ	Sciences Humaines et Sociales	Ile-de-France
ED 279	Arts plastiques, esthétique et sciences de l'art	UNIVERSITE PARIS 1	Sciences Humaines et Sociales	Ile-de-France
ED 328	Arts, lettres, langues, philosophie et communication (ALLPH@)	UNIVERSITE DE TOULOUSE-LE-MIRAIL TOULOUSE 2	Sciences Humaines et Sociales	Midi-Pyrénées
ED 127	Astronomie et astrophysique d'île de France	PARIS SCIENCES ET LETTRES - QUARTIER LATIN	Terre & Univers	Ile-de-France

Search engine of Doctoral schools

- Research by
 - keywords
 - Field of study
 - Region

> Bilingual french/english



FINANCING

YOUR

DOCTORAL STUDIES



◆ Main financial possibilities

- Doctoral contract: 1400€/month net, paid by the University
- Contract with a research structure (CNES, CNRS, CEA, ...) – Around 1500€/month
- Research contract (European programmes or National Research Agency (NRA))
- CIFRE contract (in a company, 1800€/month)

◆ Tuition fees: 391 € / year

Most French doctoral students must have sufficient financial resources (except in social sciences) during their doctoral studies to get enrolled



Grants from the French Embassy : BGF

◆ Conditions to apply:

- Offered to PhD students
- Scientific project with a French researcher in a University, research center or University hospital
- Necessary to define a clear objective for the stay: learn new techniques, use of equipment, access to special resources (bibliographical)...

- ◆ This grant is open to non-French speakers. In this case, the French researcher needs to mention in his invitation letter that the French university agrees for the internship to be performed in English. The application can also be submitted in English. Same goes for the project presentation.

◆ Calendar:

- Deadline for submitting applications: **mid-March**
- Oral presentation: Beginning of April
- Results: **By May**



◆ Conditions for a cotutelle scholarship:

- 5 months per year stay in France
- Grant given for 3 consecutive years
- Start every stay either in October or November

◆ Conditions for internship:

- For PhD students
- Stay lasting between 1 and 3 months in France
- Start every year from June and should end by December 15th



Grants from the French Embassy

	Scholarship
Monthly allowance	1060€ (~27 160 CZK)
University fees	No
Health care/insurance	Campus France insurance provided
Accommodation	Campus France can provide you with it.
International travel costs	On your own
Travel costs in France	Yes, only arrival or departure
Welcome allowance	No



LIVING IN

FRANCE



[Welcome to France!](#)



Student budgets

The average monthly student budget falls within the following ranges:

PARIS

800 € / 1,000 €



ELSEWHERE IN FRANCE

600 € / 800 €

Students enjoy discounts and financial assistance for:

- ✓ Housing
- ✓ Health care
- ✓ Transportation
- ✓ Cultural activities and hobbies



THE COST OF LIVING IN FRANCE



Housing

University housing: **€150–400 / month**
Private housing: €700–800 / month in Paris
and €350–550 elsewhere



Health care

Annual student social security
premium: **€215**
Private insurance premium:
€150–550 / year
Medical consultation: €23



Transport

1 Paris transport pass: **€73/month**
1 Paris-Nice round-trip on the TGV: **€140**
1 liter of gasoline: **€1.40**
1 city bike: **€1 / day**



1 baguette: **€1.10**
1 coffee: **€1–2**
1 kilo of pasta: **€1**
1 meal at university cafeteria: €3.25
1 fast-food meal: **€7**
1 neighborhood restaurant meal: **€15–25**



Leisure

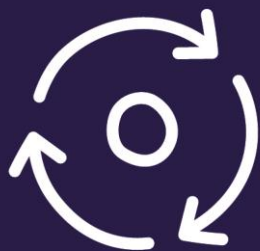
1 cinema ticket: about **€7.50**
1 museum entry fee: **€5–10**
1 admission to public pool: **€1.70**
1 paperback book: about **€6**



AFTER

YOUR

DOCTORATE



PRESTIGE Programme and PHC

◆ PRESTIGE

- Mobility programme for post-doc research
- Marie Skłodowska-Curie cofund: cofinancement of the mobility
- Possibility to apply at any time
- Criteria: to have spent less than 12 months in France during the last 3 years

◆ Partenariat Hubert Curien

- For researchers, PhD students and Post-docs
- Aim: to develop scientific exchanges through mobility
- Joint teams



STAYING IN TOUCH WITH FRANCE

- ◆ At the request of the Ministry of Foreign Affairs, Campus France coordinates France Alumni
 - ✓ The **social network** of choice for **international students** educated in France
 - ✓ A multilingual interactive **digital platform**
- ◆ **France Alumni République tchèque** : a very active network with worldwide reach
 - ✓ 460 members
 - ✓ 25 partners (13 companies)
- ◆ Graduates join France Alumni to:
 - ✓ Stay informed about cultural events near them
 - ✓ Form networks within an international community
 - ✓ Leverage their French training and create professional opportunities
 - ✓ Stay connected with France



CAMPUS FRANCE IN CZECH REPUBLIC

Francouzský institut v Praze
Štěpánská 35, 111 21 Praha 1

Elisa Pekelder
Campus France referent
prague@campusfrance.org
+420 221 401 058

Julie Hallac
Scientific Program Officer
Julie.hallac@ifp.cz
+420 221 401 003



facebook

Thank you for your attention!

